

## Notes

MOAT ARCHES 1 MOAT LEVEL

— Metal threshold to Lift Specialist Specification

- Dense concrete blockwork to form bund. To Structural Engineers specification

— Lift car and associated machinery to Specialist Consultant Specification

— J10.110 Cementitious waterproofing mortar

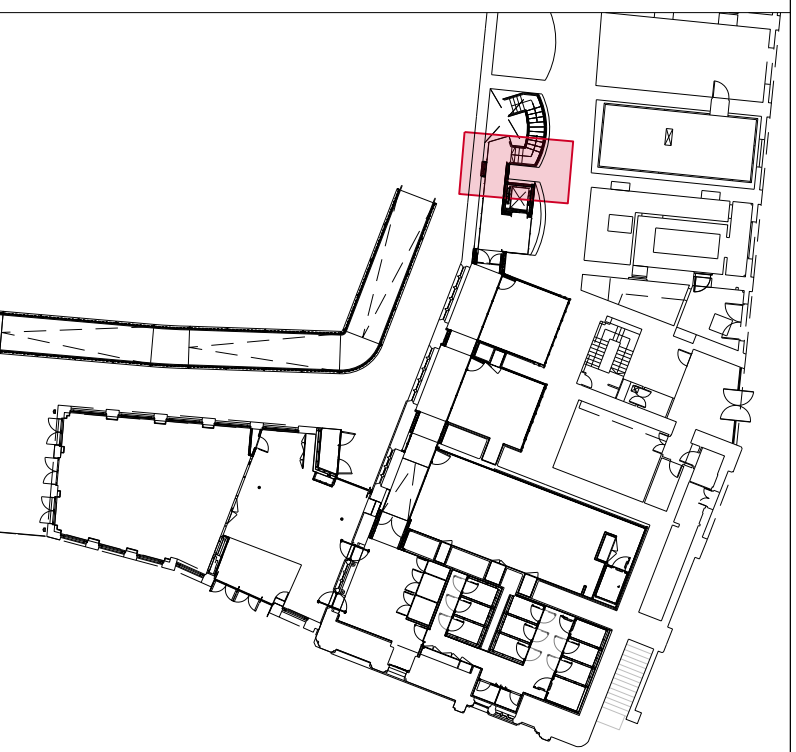
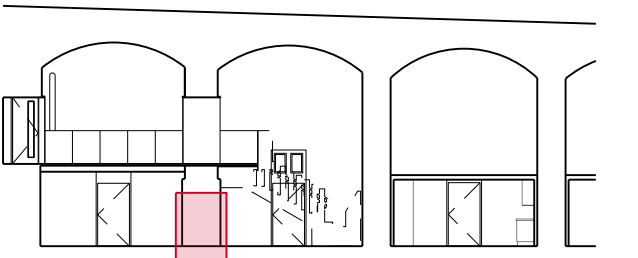
— J10.110 Water bar system

— 150 RC lift pit to Structural Engineer's Specification

FFL  
+02.610  
▽

TOS  
+02.445  
▽

TOS  
+01.410  
▽



General Notes:  
To be read in conjunction with Service Engineer, Structural Engineers  
and Heritage Architects information.

Drawings are based on survey data and may not accurately represent what is physically present.

All areas and methodologies are subject to full condition survey following strip out.

---

project	The Tower of London
---------	---------------------

Subject	Int-HH-Lift Pit Base
---------	----------------------

scale	1:5
-------	-----

Age	17 04 25
-----	----------

Drawing No. TOL\_JFA\_01\_XX\_DW\_A\_5112

General Notes:

All demolition and proposed works are to be undertaken in adherence to SMC conditions and Listed Building Consent conditions.

Jamie Fobert  
— Architects

Rochelle. 22 Club Row  
London E2 7EY  
T: +44 (0) 207 553 6560  
mail@jamiefobertarchitects.com

Copyright of Jamie Fobert Architects Ltd 2023

Unless indicated below, this drawing is for information only.  
Do not scale. Use figured dimensions only. All dimensions to be checked on site.

Issue/Revision	Date	Rev
Stage 4	18 07 25	A
Tender Draft	24 10 25	B

Project	The Tower of London
---------	---------------------

Subject	Int-HH-Lift Pit Base
---------	----------------------

scale	1:5
-------	-----

Age	17 04 25
-----	----------

Drawing No. TOL\_JFA\_01\_XX\_DW\_A\_5112

Tender DRAFT

Existing Fabric